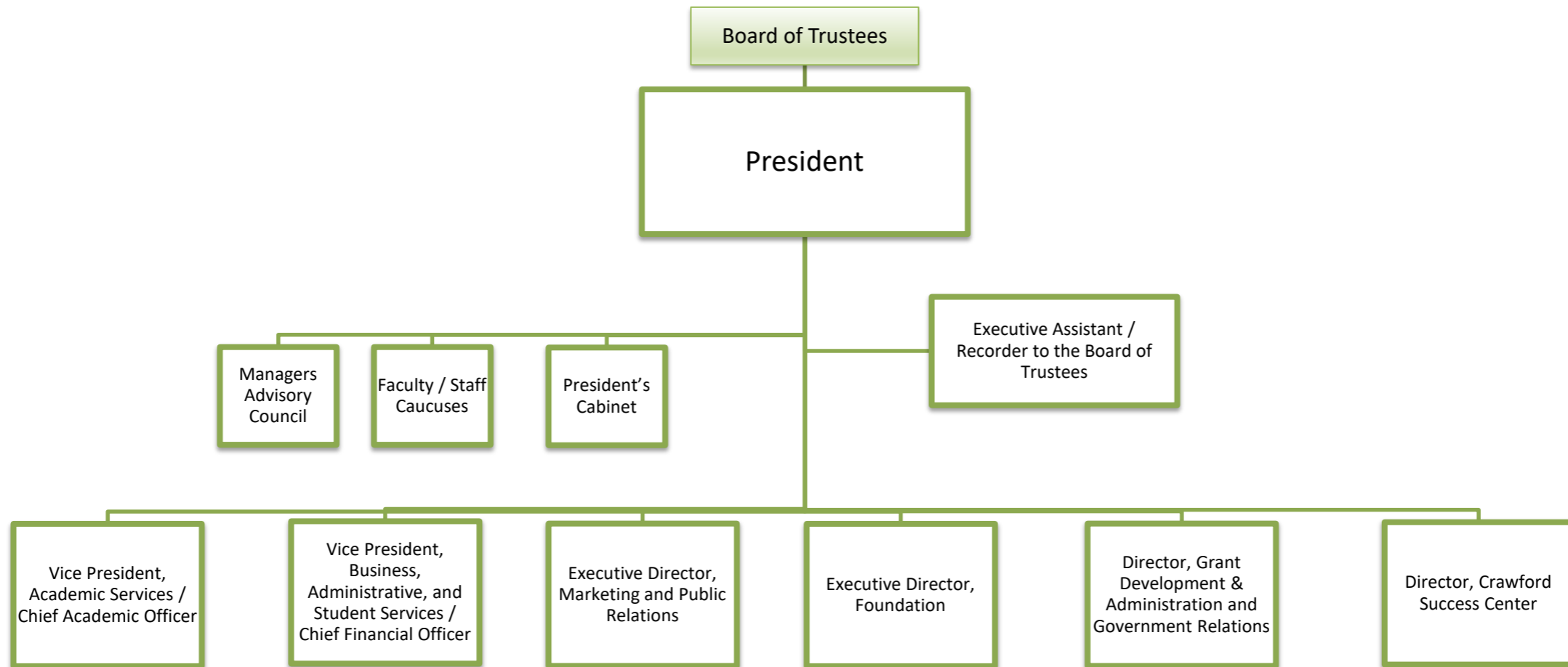
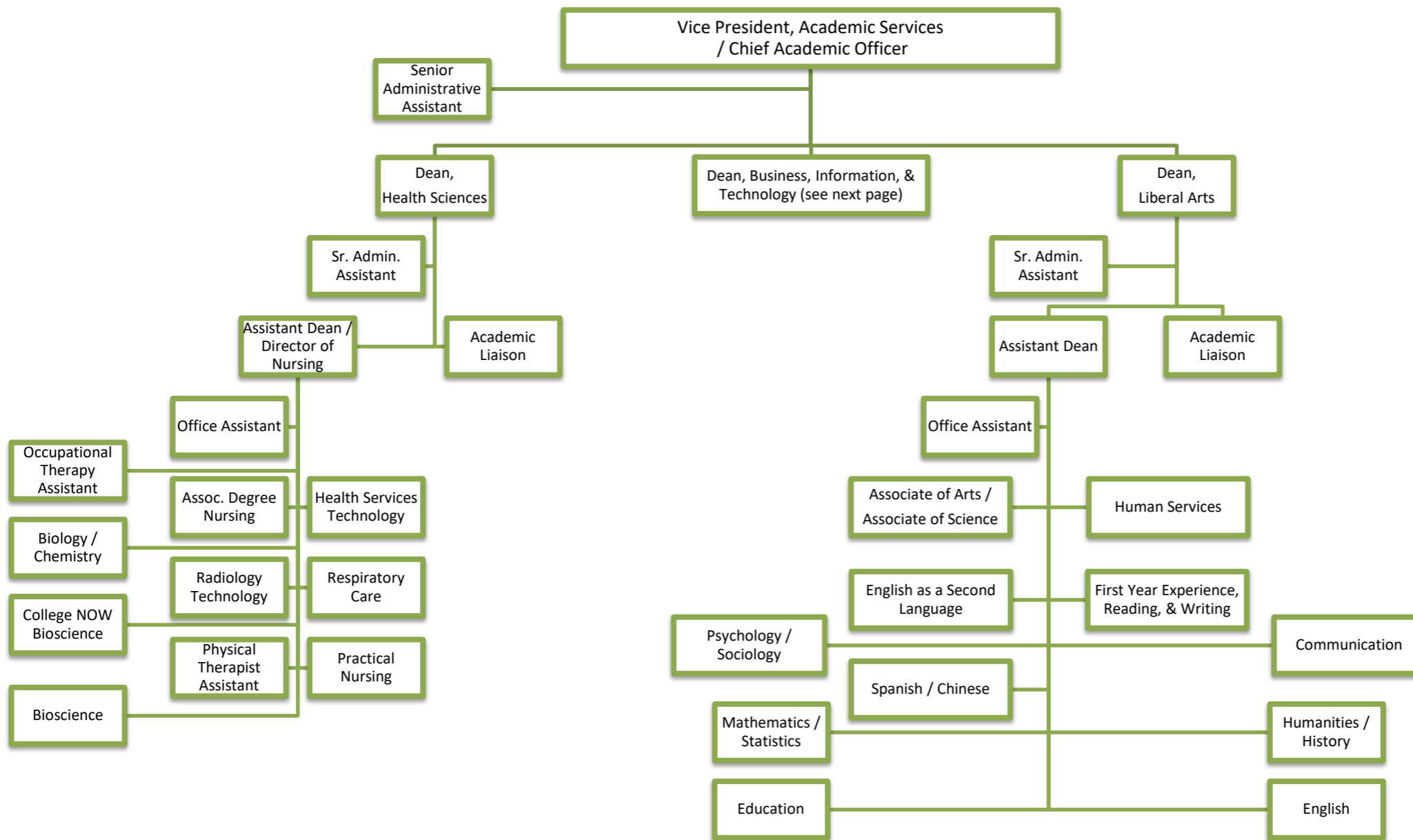


# OFFICE OF THE PRESIDENT

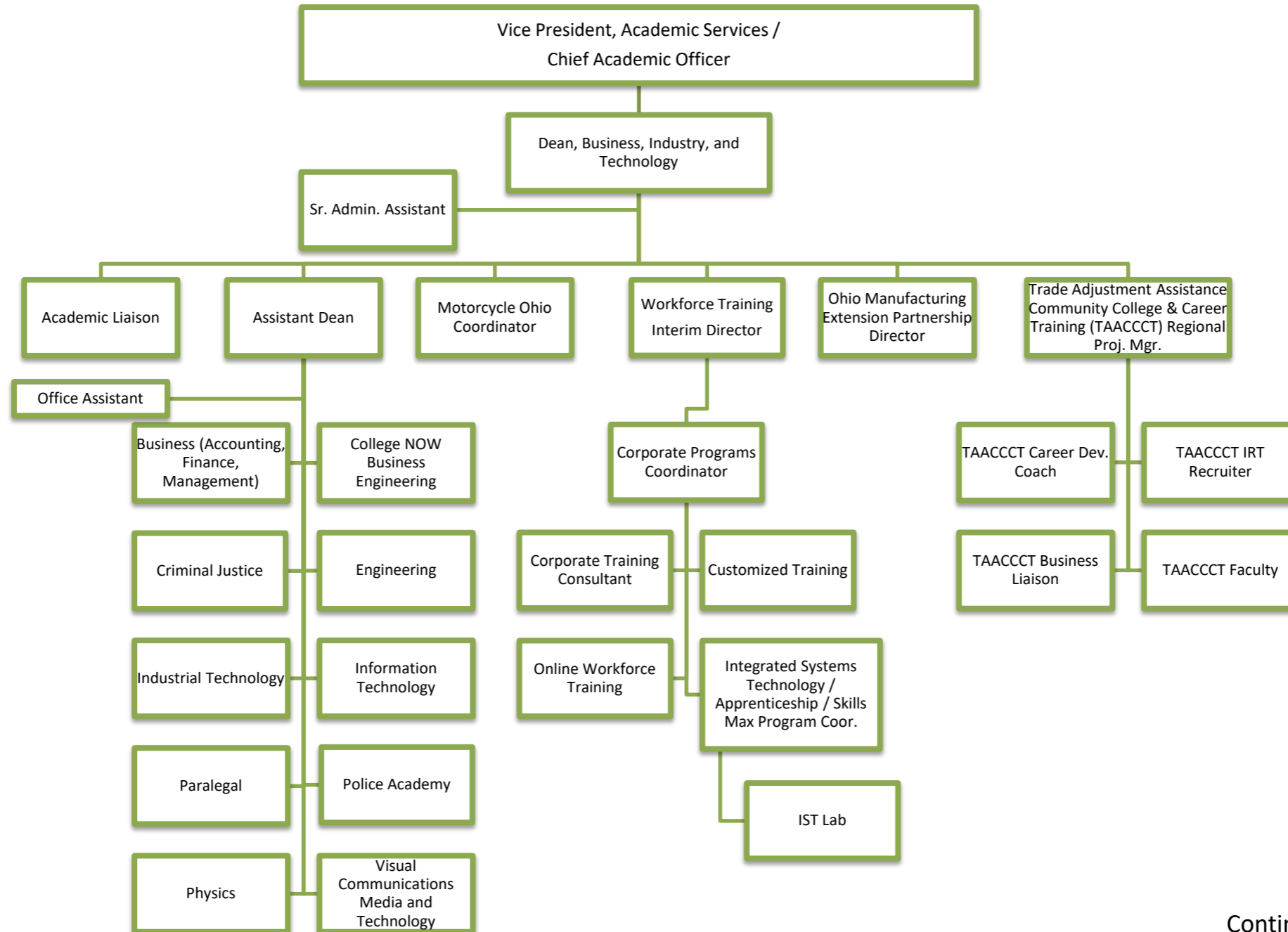


# ACADEMIC SERVICES (page 1 of 3)



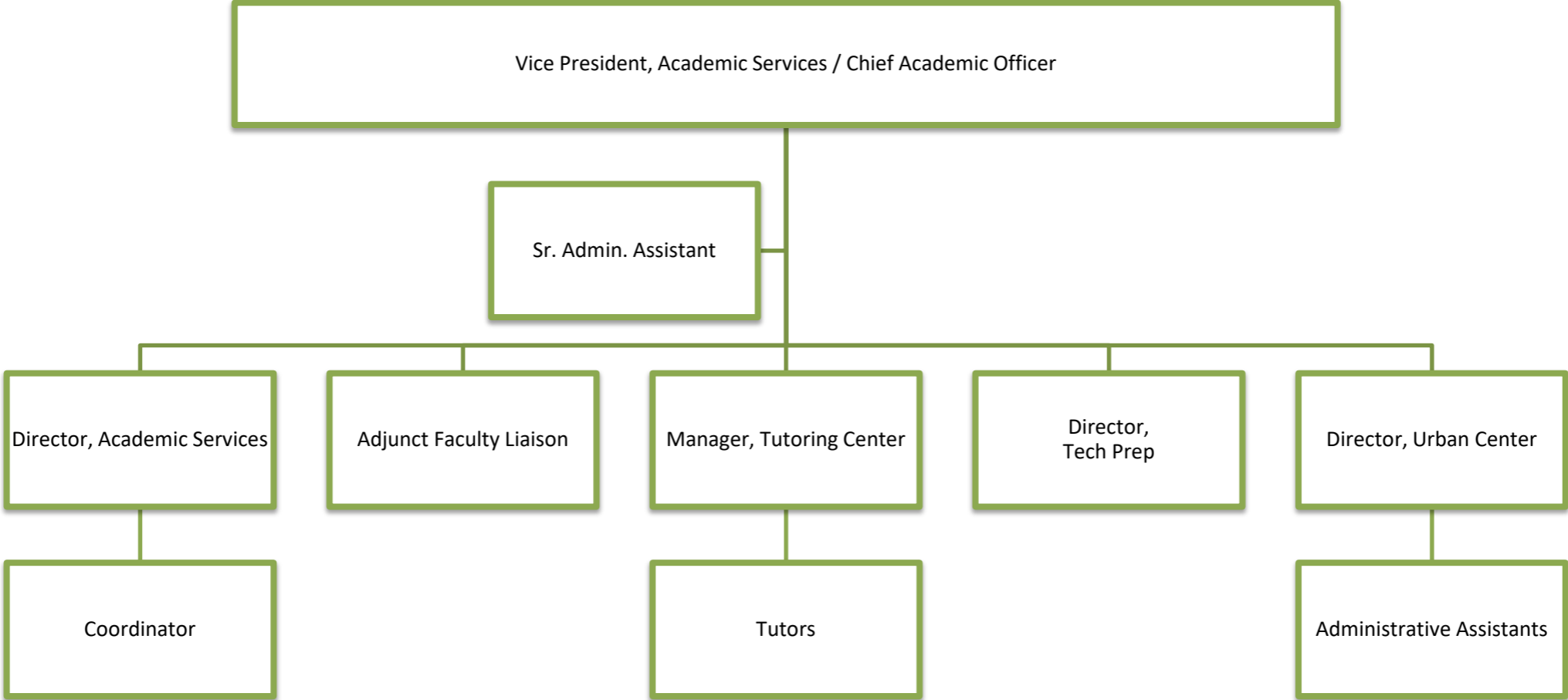
Continued on next page.

# ACADEMIC SERVICES CONT. (page 2 of 3)

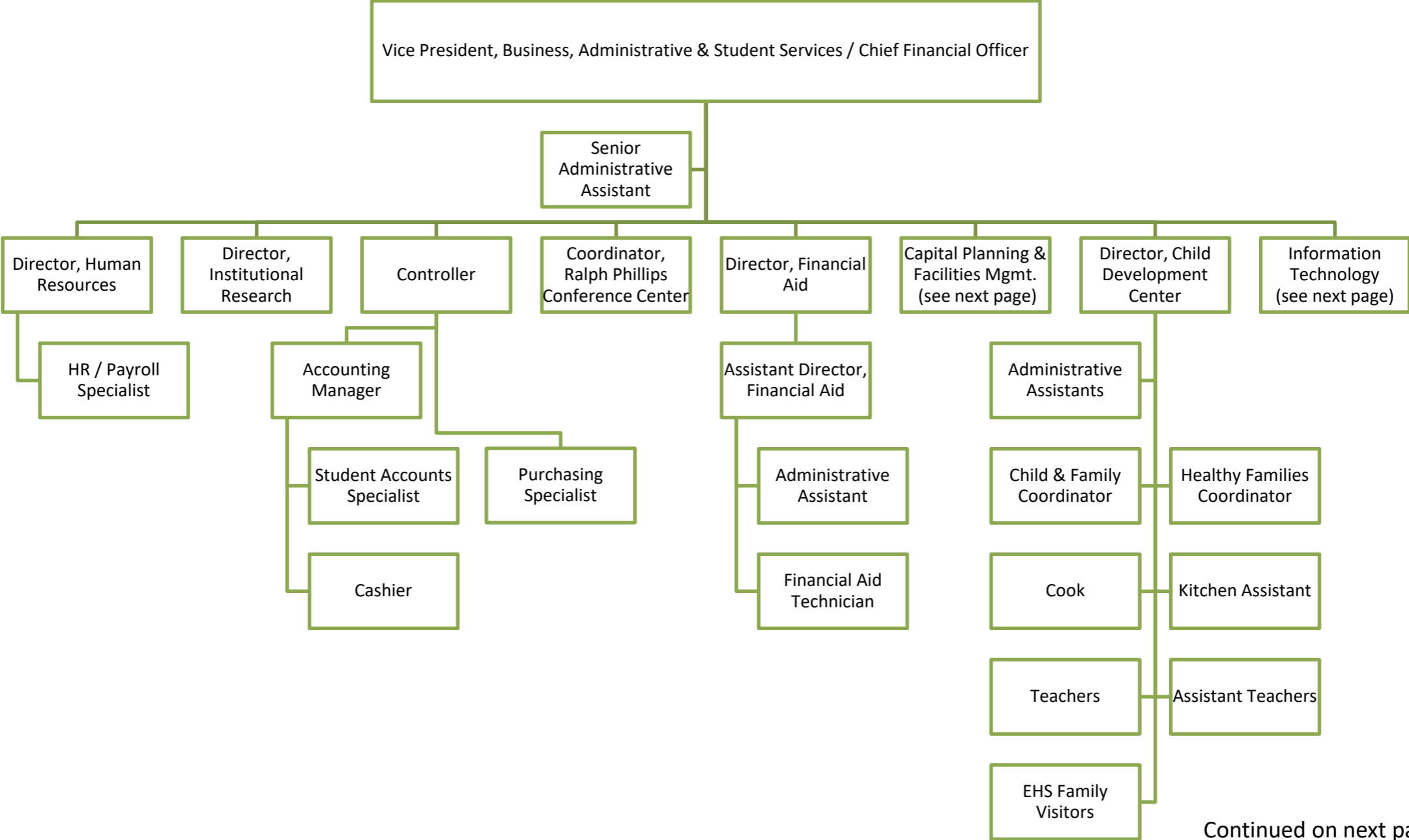


Continued on next page.

# ACADEMIC SERVICES CONT. (page 3 of 3)

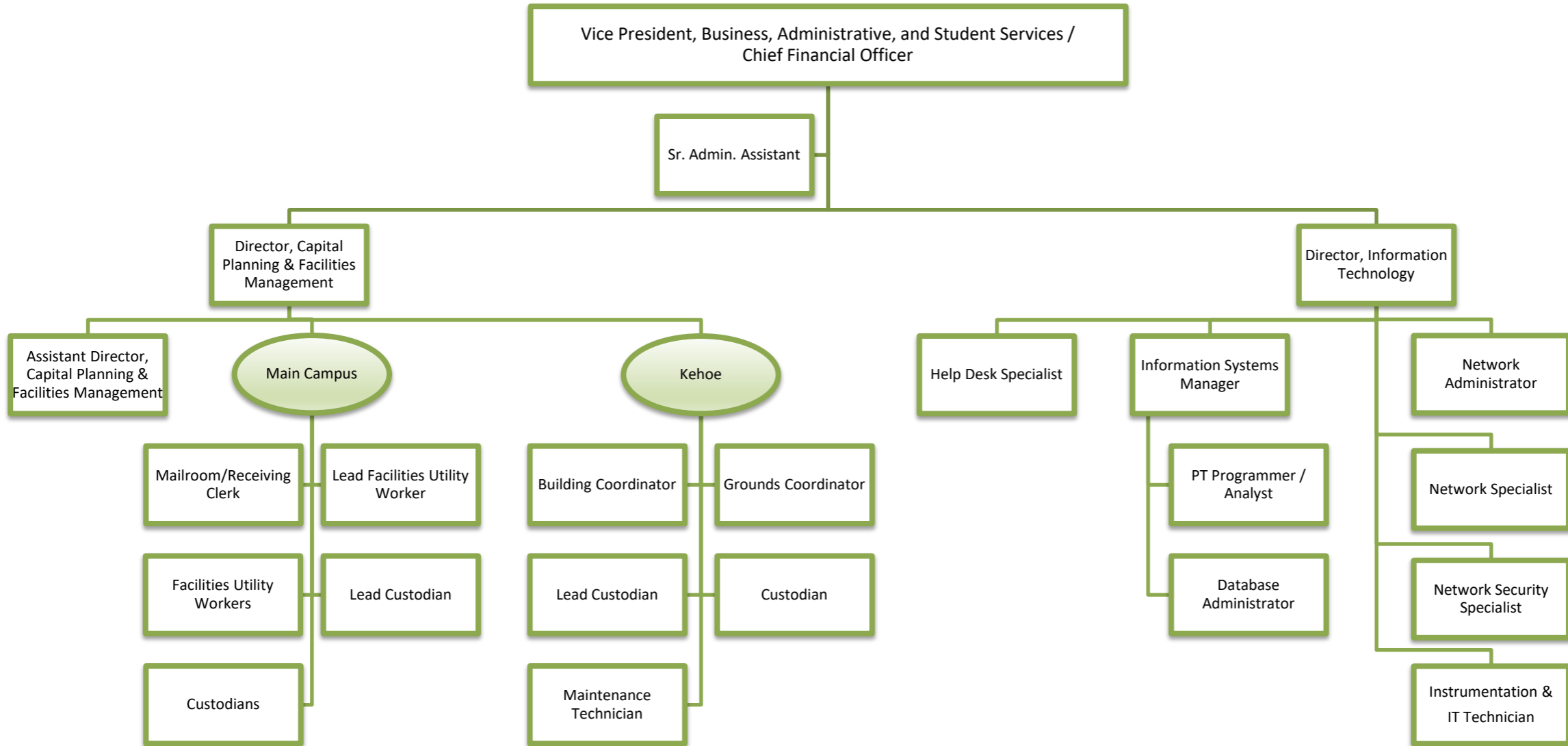


# BUSINESS, ADMINISTRATIVE, AND STUDENT SERVICES (page 1 of 3)



Continued on next page.

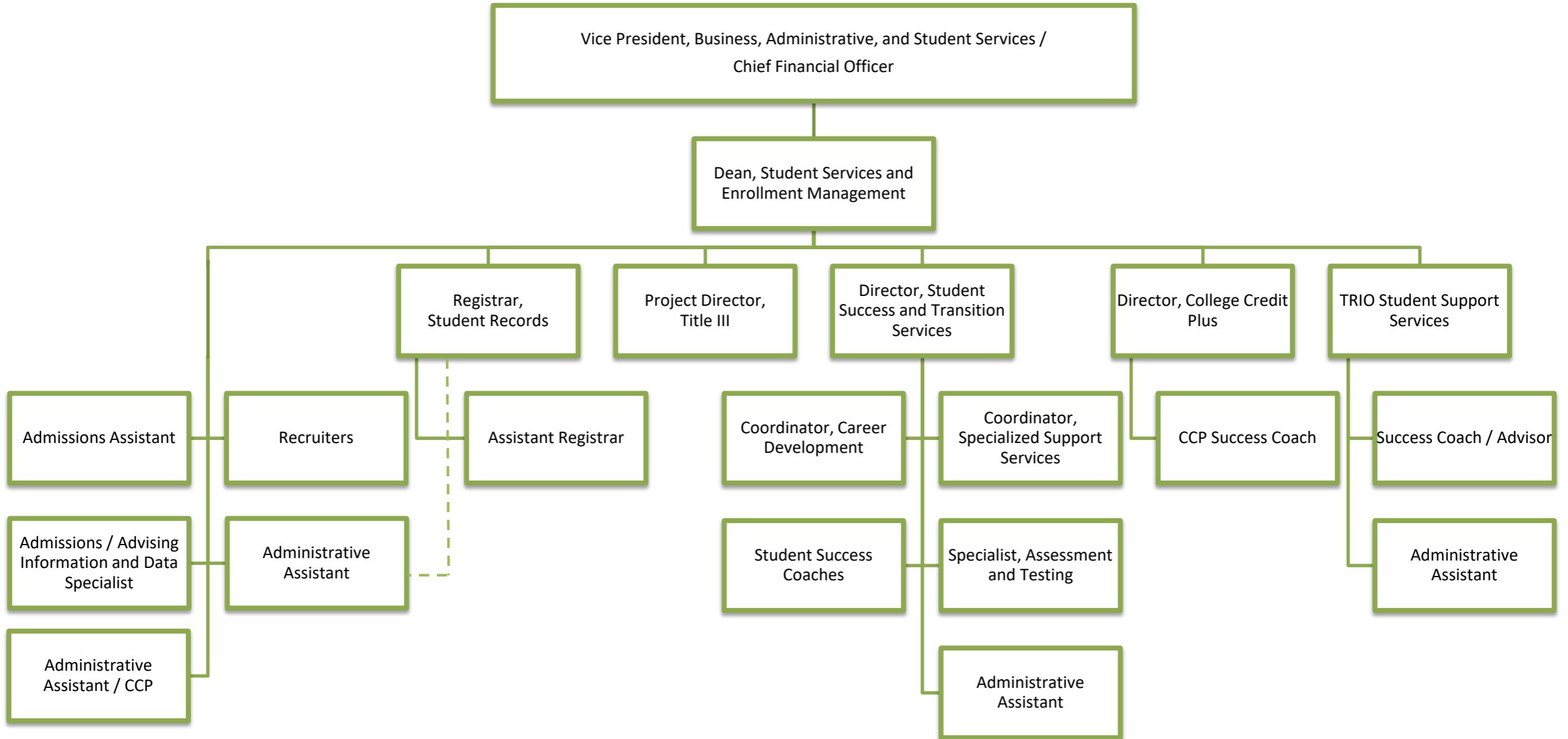
# BUSINESS, ADMINISTRATIVE, AND STUDENT SERVICES CONT. (page 2 of 3)



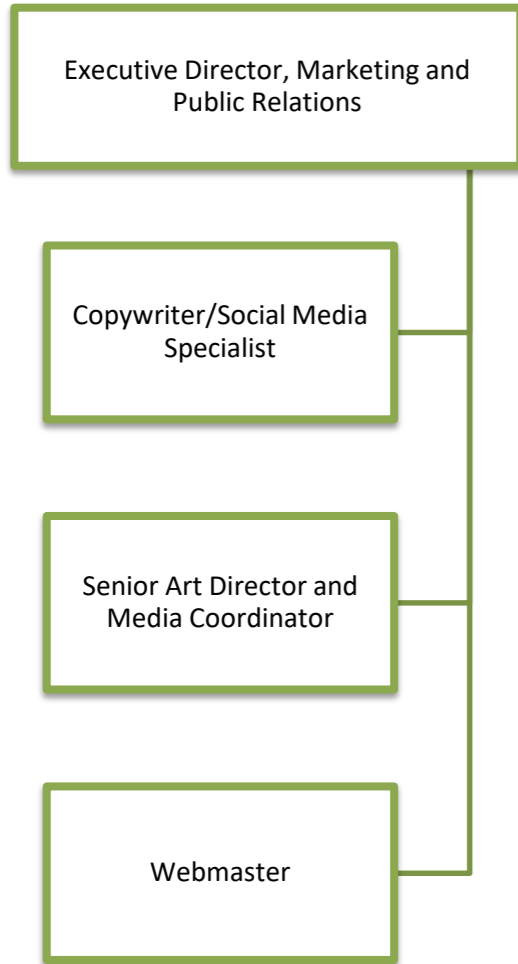
Continued on next page.

# BUSINESS, ADMINISTRATIVE, AND STUDENT SERVICES CONT. (page 3 of 3)

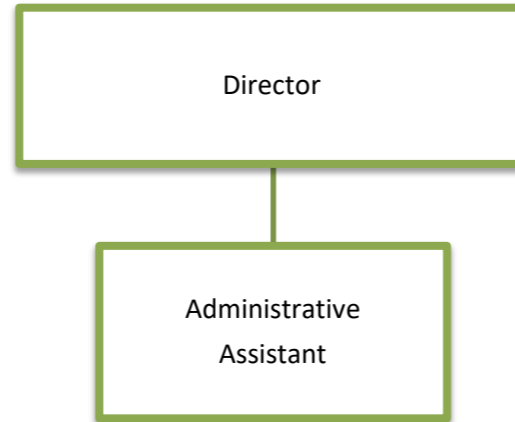
## STUDENT SERVICES



## INSTITUTIONAL ADVANCEMENT



## CRAWFORD SUCCESS CENTER



## COLLEGE FOUNDATION

