

Chapter

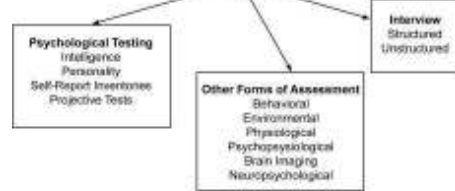
3

Assessment



8/17/2006

What Is Psychological Assessment?



8/17/2006

What Is Psychological Assessment?

Assessment:

A procedure in which a clinician evaluates a person in terms of the psychological, physical, and social factors that influence the individual's functioning.

8/17/2006

Interview



The **unstructured interview** involves a series of open-ended questions.

Information sought through interviews:

- Reasons for being in treatment
- Symptoms
- Health status
- Family background
- Life history

The **structured interview** consists of a standardized series of questions with predetermined wording and order.

8/17/2006

Mental Status Examination

To assess:

- Appearance and Behavior
- Orientation
- Content of Thought
- Thinking Style and Language
- Affect and Mood
- Perceptual Experiences
- Sense of Self
- Motivation
- Cognitive Functioning
- Insight and Judgment

8/17/2006

Mental Status Examination Appearance and Behavior

Examples of Abnormal Motor Behavior:

- Hyperactivity
- Psychomotor Agitation
- Psychomotor Retardation
- Catatonia
- Compulsion

8/17/2006

Mental Status Examination
Content of Thought

Content of Thought:
Ideas that fill a person's head.

Examples of Abnormalities:

- Obsessions
- Delusions
- Overvalued Ideas
- Magical Thinking

8/17/2006

Mental Status Examination
Affect and Mood

Affect:
An individual's outward expression of emotion.

- Inappropriate
- Blunted or Flat
- Exaggerated, Heightened, or Overdramatic
- Decreased Mobility
- Excessive Mobility
- Restricted Range

8/17/2006

Mental Status Examination
Affect and Mood

Mood:
An individual's personal experience of emotion.

Euthymic = Neither happy nor sad
Dysphoric = Unpleasant feelings
Euphoric = Cheerful, elated, possibly even ecstatic

8/17/2006

Mental Status Examination
Perceptual Experiences

Hallucination:
False perceptions not corresponding to the objective stimuli present in the environment.


- Auditory
 - Command
 - Visual
- Olfactory
- Somatic
- Gustatory

8/17/2006

Mental Status Examination
Orientation

Orientation is a person's awareness of:

- Time
- Place
- Identity



8/17/2006

Mental Status Examination
Thinking Style & Language

Symptoms involving vocabulary use and style:

- incoherence
- illogical thinking
- loosening of associations
- neologisms
- circumstantiality
- blocking
- clanging
- tangentiality
- confabulation
- echolalia
- flight of ideas
- pressure of speech
- perseveration

8/17/2006

Mental Status Examination Motivation

Motivational impairment can make even ordinary life tasks seem insurmountable.

Sense of Self

Disturbances of the individual's sense of "who I am" include:

- depersonalization
- identity confusion



8/17/2006

Mental Status Examination

Cognitive Functioning:

Level of intelligence evidence by details such as memory and abstract ability.

Problems might include memory impairment associated with Alzheimer's.



Insight and Judgment:

Understanding and decision making.

8/17/2006

Psychological Testir



What Makes a Good Psychological Test?

- Validity
- Reliability
- Standardization

8/17/2006

Intelligence Testing

Intelligence Quotient:

A method of quantifying performance on an intelligence test.

Originally:

$$\text{I.Q.} = \frac{\text{Mental Age}}{\text{Chronological Age}}$$

8/17/2006

Intelligence Testing

- First intelligence test by Binet.
- Revised as the Stanford-Binet.
- Wechsler scales now more widely used.
- Wechsler introduced deviation IQ to replace mental/chronological age ratio.

$$\text{I.Q.} = \frac{\text{Mental Age}}{\text{Chronological Age}} \times 100$$

8/17/2006

Intelligence Testing

Deviation IQ:

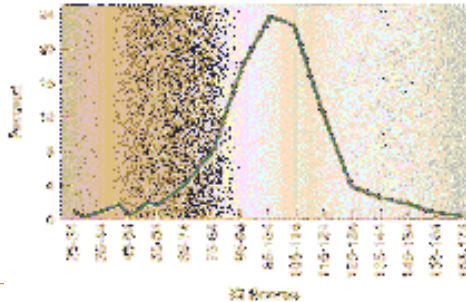
An index of intelligence derived from comparing the individual's score on an intelligence test with the mean score for that individual's reference group.

$$\text{I.Q.}$$

- > Developed by Wechsler.
- > Eventually adopted as widespread standard.
- > Incorporated into the Stanford-Binet.

8/17/2006

The distribution of IQ scores across the population fits a normal curve.



8/17/2006

Personality and Diagnostic Testing

Self-Report Clinical Inventories contain standardized questions with fixed response categories that the test-taker completes, “self-reporting” the extent to which the responses characterize him or her.

- MMPI and MMPI-2
- NEO Personality Inventory
- MCMI-III

8/17/2006

MMPI-2: Clinical & Validity Scales

- hypochondriasis
- depression
- hysteria
- psychopathic deviate
- masculinity-femininity
- paranoia
- psychasthenia
- schizophrenia
- hypomania
- social introversion
- lie scale
- correction
- infrequency

8/17/2006

Personality and Diagnostic Testing

Projective Tests

- ❖ Rorschach
- ❖ TAT



8/17/2006

Behavioral Assessment

Behavioral Assessment:
A form of measurement based on objective recording of the individual's behavior.

8/17/2006

Behavioral Assessment

Behavioral Self-Reports

- Behavioral Interviewing
- Self-Monitoring
 - Target Behavior
- Behavioral Checklists and Inventories

8/17/2006

Behavioral Assessment

Behavioral Observation

- *In Vivo* Observation
 - Limitations include reactivity.

Reactivity:

Change in a person's behavior in response to knowledge that he or she is being observed.

8/17/2006

Behavioral Assessment



- *In Vivo* Observation
- Analog Observation

8/17/2006

Environmental Assessment



Environmental Assessment:

A form of measurement examining the environment in which the individual lives.

8/17/2006

Physiological Assessment

Many psychological disorders occur in the presence of physiological disturbances.



Disturbances may be:

- localized in brain, perhaps as structural abnormality or
- physical disorders (e.g., diabetes, AIDS) that may alter psychological functioning.

8/17/2006

Physiological Assessment

Psychophysiological Techniques

- ECG, BP, EMG

Physiological Techniques

Brain Imaging:

- EEG, CT, MRI, PET



8/17/2006

Psychophysiological Assessment

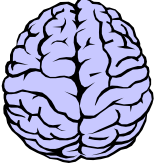
Many clinicians and researchers assess changes in the body associated with psychological or emotional experiences, especially in:



- cardiovascular system
- muscles
- skin
- brain

8/17/2006

Neuropsychological Assessment



Neuropsychological assessment:

A process of gathering information about a client's brain functioning on the basis of performance on psychological tests.

8/17/2006